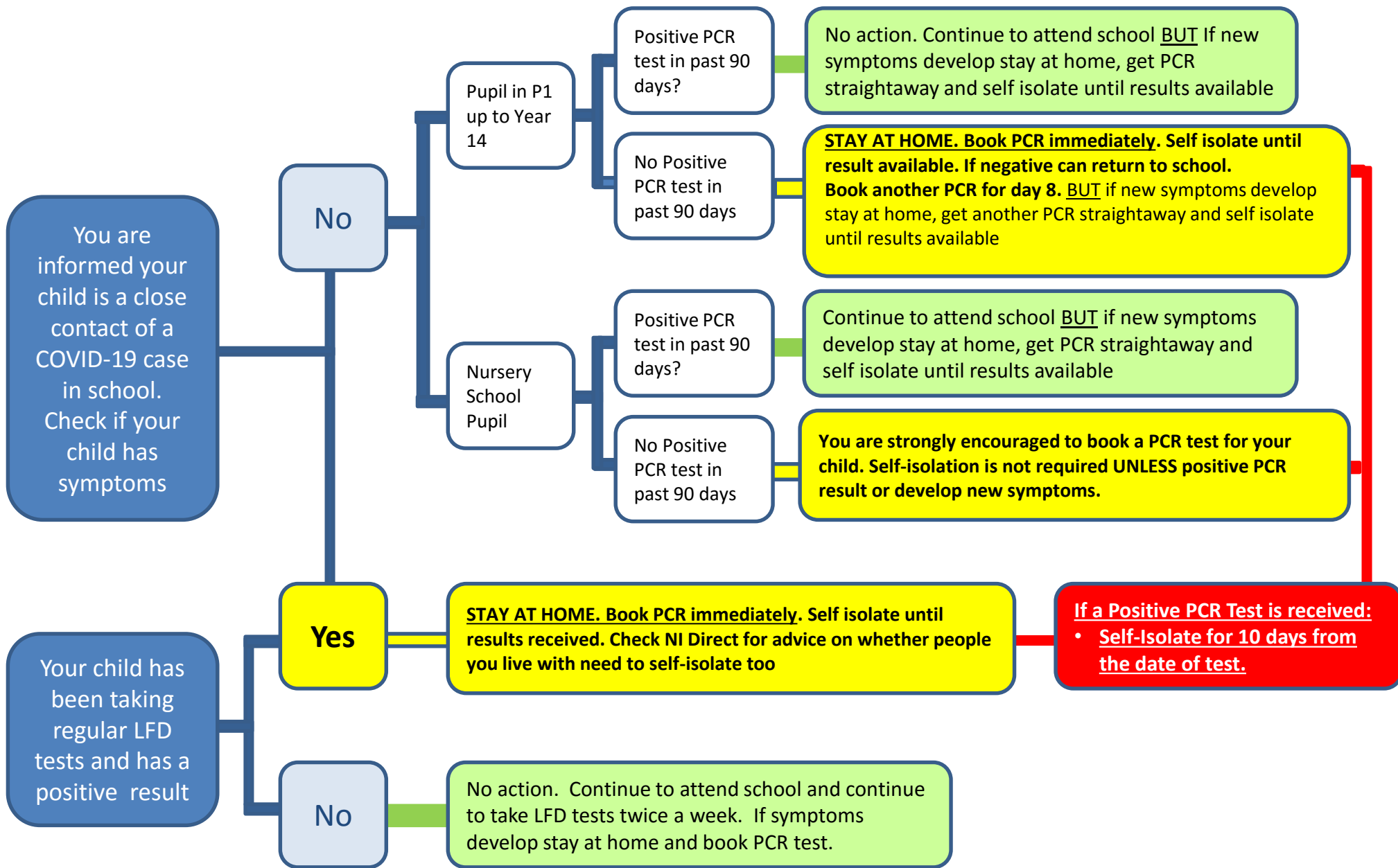


# Flowchart for PARENTS based on NI Direct website guidance

Only use for pupils in a school setting 03/09/2021



You are informed your child is a close contact of a COVID-19 case in school. Check if your child has symptoms

No

Pupil in P1 up to Year 14

Positive PCR test in past 90 days?

No action. Continue to attend school BUT If new symptoms develop stay at home, get PCR straightaway and self isolate until results available

No Positive PCR test in past 90 days

**STAY AT HOME. Book PCR immediately. Self isolate until result available. If negative can return to school. Book another PCR for day 8. BUT if new symptoms develop stay at home, get another PCR straightaway and self isolate until results available**

Nursery School Pupil

Positive PCR test in past 90 days?

Continue to attend school BUT if new symptoms develop stay at home, get PCR straightaway and self isolate until results available

No Positive PCR test in past 90 days

**You are strongly encouraged to book a PCR test for your child. Self-isolation is not required UNLESS positive PCR result or develop new symptoms.**

Yes

**STAY AT HOME. Book PCR immediately. Self isolate until results received. Check NI Direct for advice on whether people you live with need to self-isolate too**

**If a Positive PCR Test is received:**  
• Self-Isolate for 10 days from the date of test.

Your child has been taking regular LFD tests and has a positive result

No

No action. Continue to attend school and continue to take LFD tests twice a week. If symptoms develop stay at home and book PCR test.